

# Story of a Day / Scéal Lae

Branar and Galway Music Residency

## Galway International Arts Festival

**Date:** Saturday 19 July

**Time:** 3:30pm

**Venue:** The Cube,  
University of Galway



This information pack will provide you with information about the show Story of a Day / Scéal Lae including a picture supported venue guide, synopsis of the show, descriptions of what you will see, hear and experience, and some useful information.

If you need any more information or would like to speak to one of the team, please don't hesitate to contact Branar at [info@branar.ie](mailto:info@branar.ie)

## This information pack is in 3 sections:

1. Information about the ISL / Relaxed Performance (Sat 19 July at 15:30)
2. The Venue (visual story of the venue and what to expect when you arrive)
3. The Show (Synopsis, the cast and some good to know information)



Galway International Arts Festival volunteers will be at the show venue on the day if you need assistance. They will be wearing t-shirts like those in this photo.

# Information about the ISL and Relaxed Performance (Sat 19 July 15:30)

Relaxed performances are designed to create a more inclusive and welcoming experience for people with sensory sensitivities, learning disabilities, autism, or other conditions that may make it difficult to attend standard shows.

## Good to know

- The performance is about 40 minutes in duration
- There will be an Irish Sign Language (ISL) Interpreter standing to one side of the stage during the performance. They will interpret the show for ISL users in the audience.
- There is a relaxed attitude to audience noise
- There is a reduced capacity so that there is more room to move
- The lights in the auditorium will remain on low throughout the show
- Audience members are free to leave and re-enter the auditorium at any point
- A limited number of sensory backpacks will be available to borrow for the duration of the show. The backpacks contain ear defenders, a stress ball and fidget toys
- There is a Quiet-Room close to The Cube (where the show is being presented) for audience members who might need a quiet space before and during the performance.

## Trigger warnings

- Consistent sound. There are points in the show where the excitement builds gradually and the volume increases a little with that. In particular there is a moment of excitement about 20 minutes into the show when a whistle sounds for football followed by a goal score in the playground. The actors voice gets louder at this point. There is also a school bell which rings three times during the show.
- The lights will dim when the show is about to start

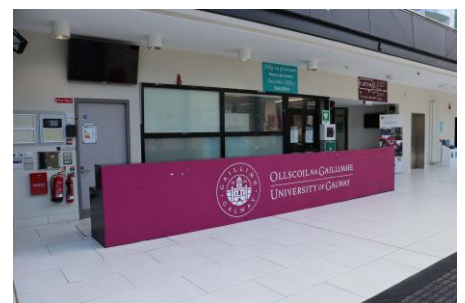
# The Venue

The Cube, Bailey Allen Wing, University of Galway



The building where The Cube is looks like this. It is in the grounds of the University of Galway. The main entrance door is marked with the arrow.

The first thing you will see is this hallway. There will be Galway International Arts Festival volunteers there to welcome you. They are happy to help if you have any questions or if you aren't sure where to go. They can also help you with your tickets



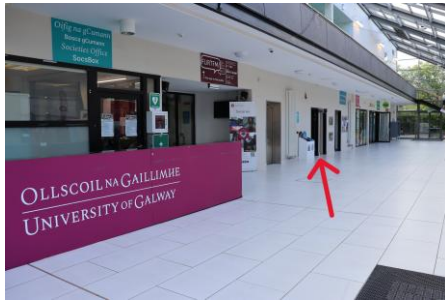
To your left when you enter the main door you will see double doors with glass panels. When you go through these doors the entrance to The Cube (where the show will be performed) will be on your left.

This is the entrance door to The Cube



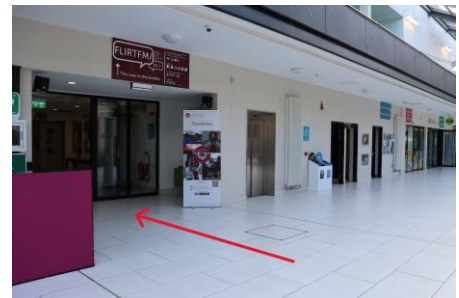
This is the seating in The Cube. The wooden floor is the stage area. It will look a bit different because it will be set up for the show

## Facilities

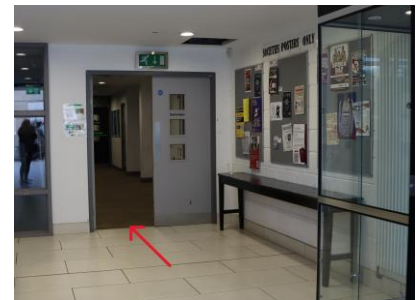


The **bathrooms** are to the right from the main entrance door to the building

The **Quiet Room** is in the same area as the bathrooms. To get to it enter the short corridor marked with the red arrow here



When you enter the corridor, you will see another door ahead of you. Continue through it.



Along that corridor on the right you will see this door, continue through it and the Quiet Room is on your left.



This is the Quiet Room, it may look a little different on the day. There will be someone to guide you to the Quiet Room if you would like to use it.





# The Show – Scéal Lae / Story of a Day



## Synopsis

*I'm awake I think... But what was it that woke me?*

*That tap on the window, that sliver of sun on the wall, my cold foot?*

*Or did my dream wake me?*

So begins a music filled story of one child's day that turns the ordinary into the extraordinary with vibrant storytelling, vivid animation and live music.

## Performers:

Story of a Day / Scéal Lae has 7 performers  
(1 actor, 1 conductor and 5 musicians), they look like this:



Eoin Ó Dubhghail is the actor.



Tom Lane is the conductor (he also composed the music).



Bogdan Sofie plays violin.



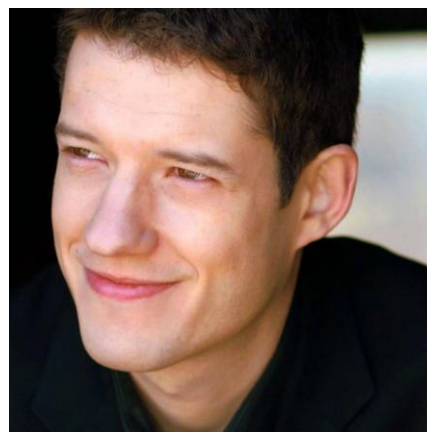
Ingrid Nicola also plays violin.



Andreea Banciu plays viola.



Eszter Cetinceviz plays cello.



David Browell plays piano.

## The Performance

The performers will be in their costumes for the performance.

- The lights will dim when the show is about to start.
- The musicians will come on stage and get ready to play.
- Eoin will then come onto the stage with a duvet covering him.



The stage will look like this when the show is about to begin

- The musicians will begin playing music to start the show.
- Pictures will be projected onto a screen at the back of the stage
- You will experience different sights and sounds during the show
- After the show there will be clapping

## Seating

For the show you will be sitting in tiered rows of blue chairs, with each row slightly higher than the row in front, all facing the stage. There are spaces for wheelchair users or anyone that needs extra space in the front row.

## Set

There is a wooden trolley with curtains on one end to the left of the stage. There is a big white screen at the back of the stage on which pictures are projected. There are seats and music stands for the musicians to the right of the stage, as well as a piano.

## Experience

Eoin, the actor, uses a wooden trolley, like a cupboard on wheels to create different scenes from inside the boy's home. These include his bedroom, the kitchen and the desk where he does his homework. He also uses a portable stool in various different locations – home, classroom, bus.

Eoin changes what he is wearing to show that he is going outside or inside.

## Sounds:

There is live music playing throughout the show, as well as some sounds through speakers. You will hear lots of different sounds and noises for example sounds of dishes and cutlery, bird sounds, footsteps on gravel, animal sounds, sounds of children in a playground, a school bell, the sound of eating an apple, bubbles through a straw; and a kalimba musical instrument.



## Sights:

There are colourful animated drawings on screen. On stage there is a wooden trolley, a screen, a piano, and seats and a stand for the musicians and conductor. Eoin moves around the stage. The musicians and conductor move in their places as they make music. There will also be an Irish Sign Language interpreter to the side of the stage using movement and facial expression to interpret the show for audience members who use Irish Sign Language.